



The Leading Rental Provider of High Specification Downhole Tubulars and Accessories



Products

Workstrings International® provides the highest quality downhole rental tubulars and associated accessories, value-added engineering services and operational support while maintaining the industry's highest health, safety and environmental standards.



Landing String (5" - 7 5/8")

- 7 5/8" MaXit™ 807 Completion Landing String
- 6 5/8" FASTR® 2.0 - 2.5 MM lbs Slip-Proof® Landing String

Completion Strings (2 7/8" - 7 5/8")

- 6 5/8" GTM69
- 6 5/8" TTM710
- 5 7/8" CTM57 .361", .415", .500", .625"
- 4 1/2" CTM43
- 4" CTM39
- 2 7/8" CTM26

Drill Pipe (2 7/8" - 6 5/8")

- All API Connections and Specialty Connections (HT, XT, uXT, TT®, XTM, CTM, GTM, TTM®, VAM® Express™, VAM® CDS™, GPDS, P-Tech™ and Delta™)

Handling Tools & Accessories

- FASTR® Slip System
Slips, Master Bushings, Bowls, Backsaver®
- Heavy Weight Drill Pipe (3 1/2" - 6 5/8")
Slick, Spiral and Tri-Spiral
- Drill Collars (3 1/8" - 9 1/2") Spiral or Slick
- Landing String and Drill Pipe Pup Joints
- Elevators (2 3/8" - 7 5/8")
Hydraulic and Manual
- Lower Kelly Valves, IBOPs, Safety Valves
- On-Site Valve Repair Facility and Machine Shop
- B.O.P./Wellhead Washtool
- Certified Cargo Baskets
- Crossover Subs, Pump-In Subs, Drill Collar Lift Subs
- Bit Subs

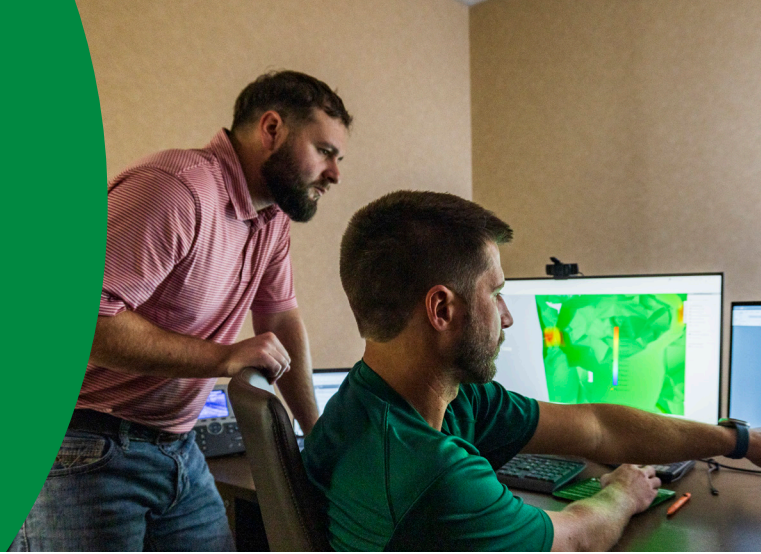


Workstrings International® combines technical expertise with proactive ingenuity to solve the oil and gas industry's biggest challenges, redefining the expectations for what's possible.

Learn More at www.workstrings.com

Engineering Services

Workstrings International® has a staff of Engineers to support domestic and international projects by providing the following services to our customers:



String Design Modeling

Collaborative string design using industry standard torque and drag modeling software that considers trajectory, rig equipment, hydraulics, slip-crushing limitations, drilling parameters, and any other identified parameters or constraints to optimize a design to work for each particular section and project.

Tubular Performance Analysis

An in-house developed calculator as per API 5C3 utilized to evaluate tension, torsion, burst, and collapse of tubulars and accessories, with or without biaxial loading.

Historical Modeling Calibration

Review of actual drilling data to validate and calibrate future design modeling.

Connection Analysis

Evaluation of the mechanical properties of API and proprietary connections.

Specialty Tool Design

Solutions and specialty work string tools and accessory designs, including custom crossovers, lift subs, side-entry pump-in subs, and many others to meet unique well, rig, and operational challenges.

Failure Analysis

Assist Operations and QA/QC teams with failure and root cause analysis.

Slip-Crushing

Calculations that consider actual slip design, length of die contact with the pipe, pipe dimensions, and yield strength that are backed by physical load testing.



Engineering Support

- Optimized Tubular Project Design
- Torque and Drag Modeling
- Hydraulics Modeling
- Landing String Design
- Reduced Collapse Calculations
- Tubular Connection Analysis
- Finite Element Analysis
- Project Management

Learn More at www.workstrings.com

Deep Inventory. Even Deeper Expertise.



Scan Code for all of our
current specification sheets

Global Headquarters

1150 Smede Hwy
Broussard, LA 70518 - USA
Phone: +1 888.978.7464
Email: info@workstrings.com

Engineering & Marketing

1001 Louisiana St., Suite 2900
Houston, TX 77002 - USA
Phone: +1 281.999.0047
Email: marketing@workstrings.com

EMEA Corporate

Kirkton Avenue, Dyce
Aberdeen, AB21 0BF - UK
Phone: +44 1224.724900
Email: sales.uk@workstrings.com

www.workstrings.com